

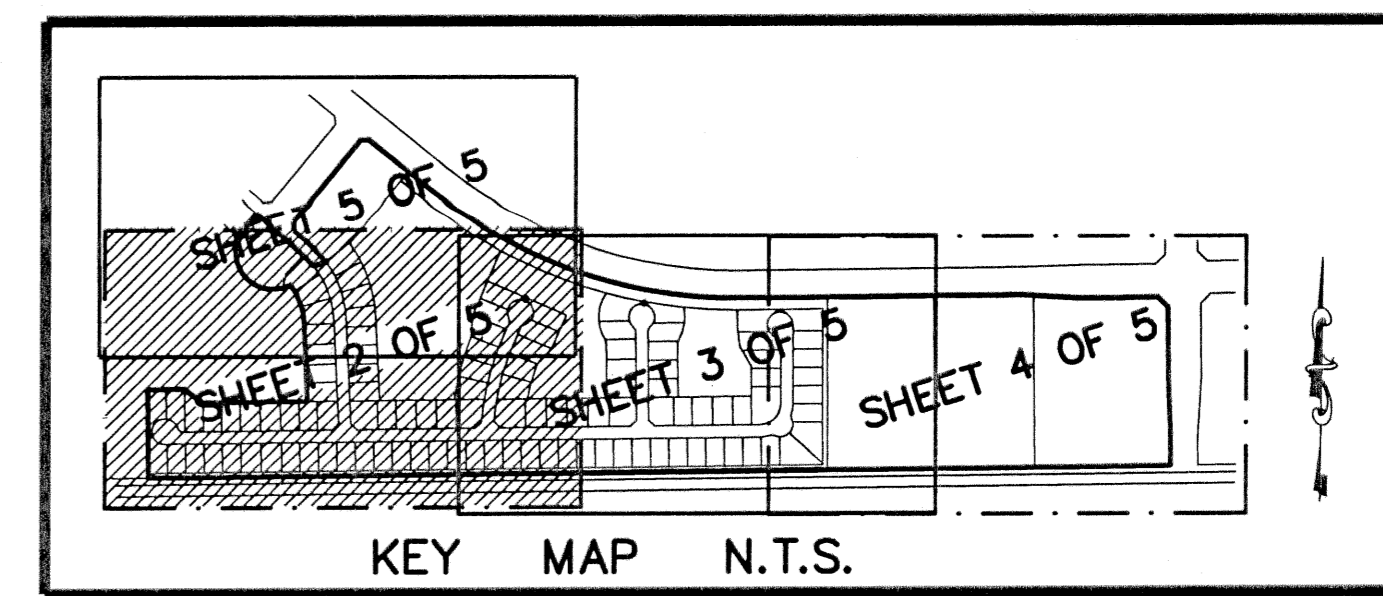
VILLAGES OF WINDSOR PLAT TWO

A PLANNED UNIT DEVELOPMENT BEING A PART OF VILLAGES OF WINDSOR PUD
BEING A REPLAT OF A PORTION OF BLOCK 43, "PALM BEACH FARMS COMPANY PLAT NO. 3, AS RECORDED IN PLAT BOOK 2, PAGES 45 THROUGH 54,
TOGETHER WITH TRACTS L1, Z1, F AND F1, "VILLAGES OF WINDSOR PLAT ONE", AS RECORDED IN PLAT BOOK 93, PAGES 64 THROUGH 67,
BOTH OF THE PUBLIC RECORDS OF PALM BEACH COUNTY, FLORIDA, LYING IN SECTION 7, TOWNSHIP 45 SOUTH, RANGE 42 EAST, PALM BEACH COUNTY, FLORIDA

NOTES COORDINATES, BEARINGS AND DISTANCES

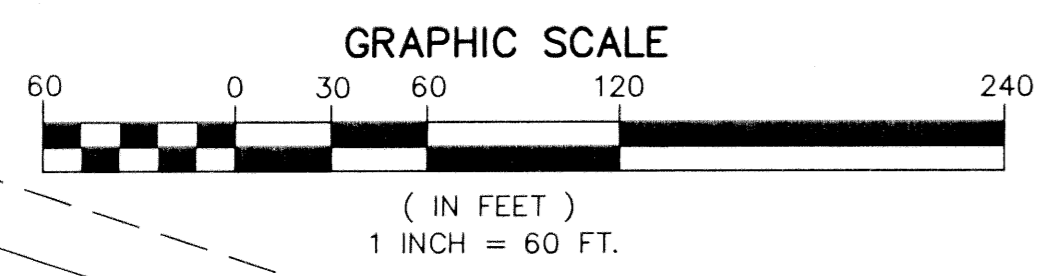
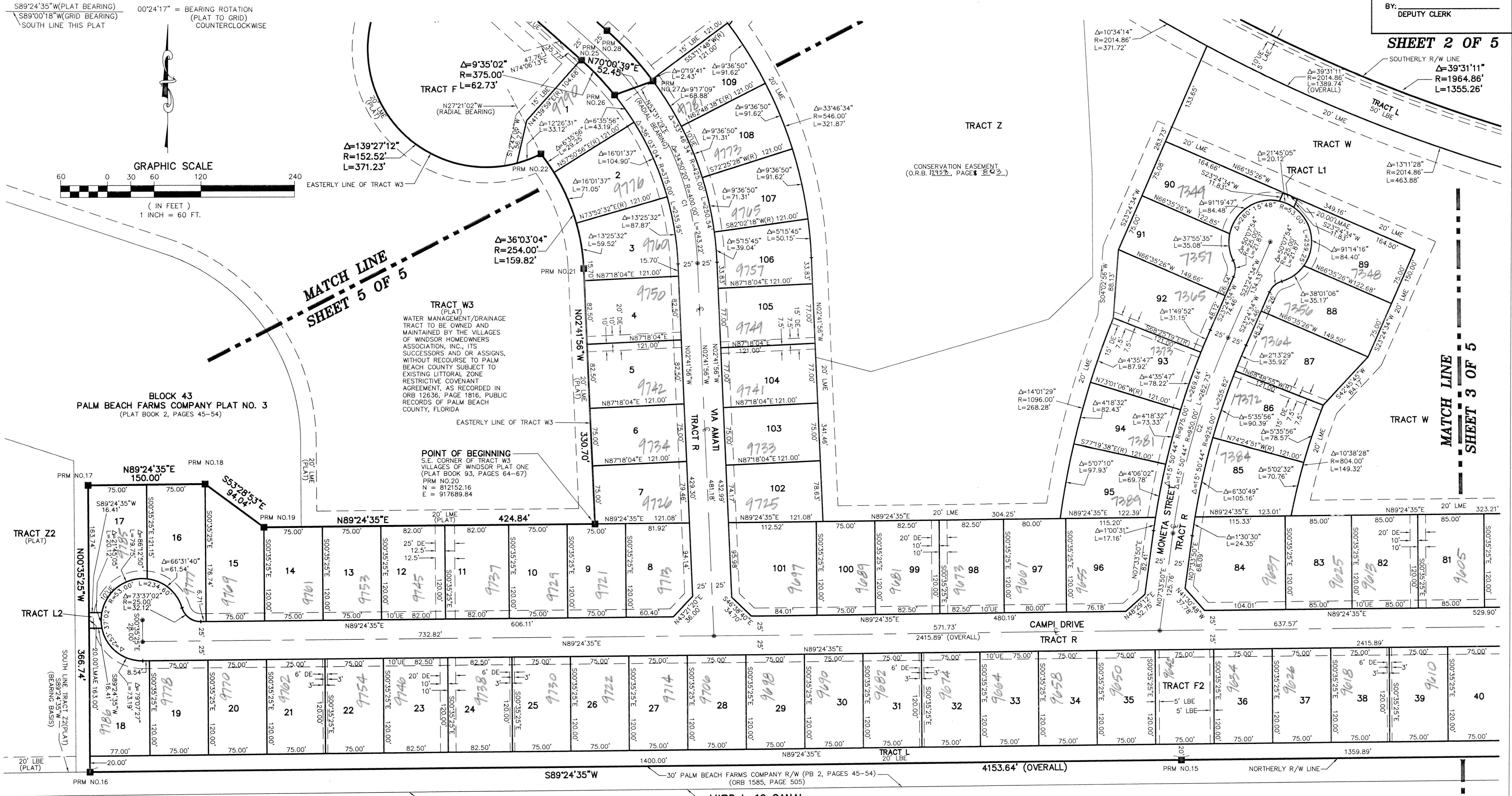
COORDINATES SHOWN ARE GRID
DATUM = NAD 83 1990 ADJUSTMENT
ZONE = FLORIDA EAST
LINEAR UNIT = US SURVEY FEET
COORDINATE SYSTEM 1983 STATE PLANE
TRANSVERSE MERCATOR PROJECTION
ALL DISTANCES ARE GROUND
SCALE FACTOR = 1.0000195
GROUND DISTANCE X SCALE FACTOR = GRID DISTANCE
BEARINGS AS SHOWN HEREON ARE GRID DATUM, NAD 83 1990
ADJUSTMENT, FLORIDA EAST ZONE.
COORDINATES SHOWN ON THE CONTROL P.R.M.S MEET OR
EXCEED THE LOCAL ACCURACY REQUIREMENTS OF A 2
CENTIMETER GEODETIC CONTROL SURVEY.

THIS INSTRUMENT PREPARED BY
DAVID P. LINDLEY
OF
CAULFIELD and WHEELER, INC.
SURVEYORS - ENGINEERS - PLANNERS
7301-A WEST PALMETTO PARK ROAD, SUITE 100A
BOCA RATON, FLORIDA 33433 - (561)392-1991
JULY - 2002



STATE OF FLORIDA
COUNTY OF PALM BEACH
THIS PLAT WAS FILED FOR
RECORD AT _____ M.
THIS _____ DAY OF _____
A.D. 2002 AND DULY RECORDED
IN PLAT BOOK _____ ON
PAGES _____ AND _____
DOROTHY H. WILKEN
CLERK CIRCUIT COURT

BY: _____
DEPUTY CLERK



SUBDIVISION VILLAGES OF WINDSOR PL 2
BLOCK 43
PAGE 149
CLASS MAP # 1854
ZONING PUD
ZIP CODE 33461
TAX MAP # 743
PUD NAME VILLAGES OF WINDSOR